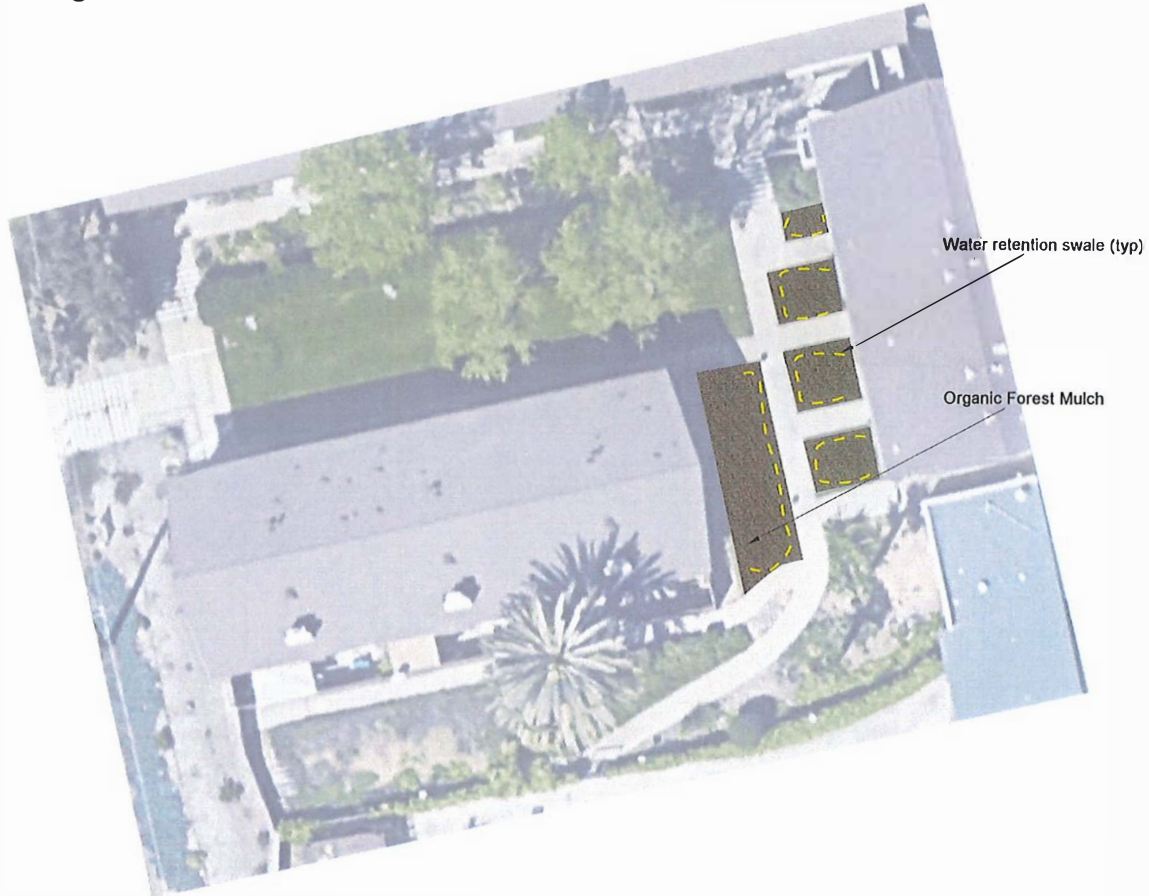


Swales and water retention: The yellow lines on the attached plans represent the planned locations of berms, created with on-site soil to contour the new planter areas. These are neither designed nor intended to retain all nuisance water on-site, rather allow irrigation runoff or normal rainfall runoff the best chance to percolate into the on-site soils. At a height of 6"-10", these berms also acts as a buffer to slow down larger rain events, as the water will be directed towards drainage inlets and basins.



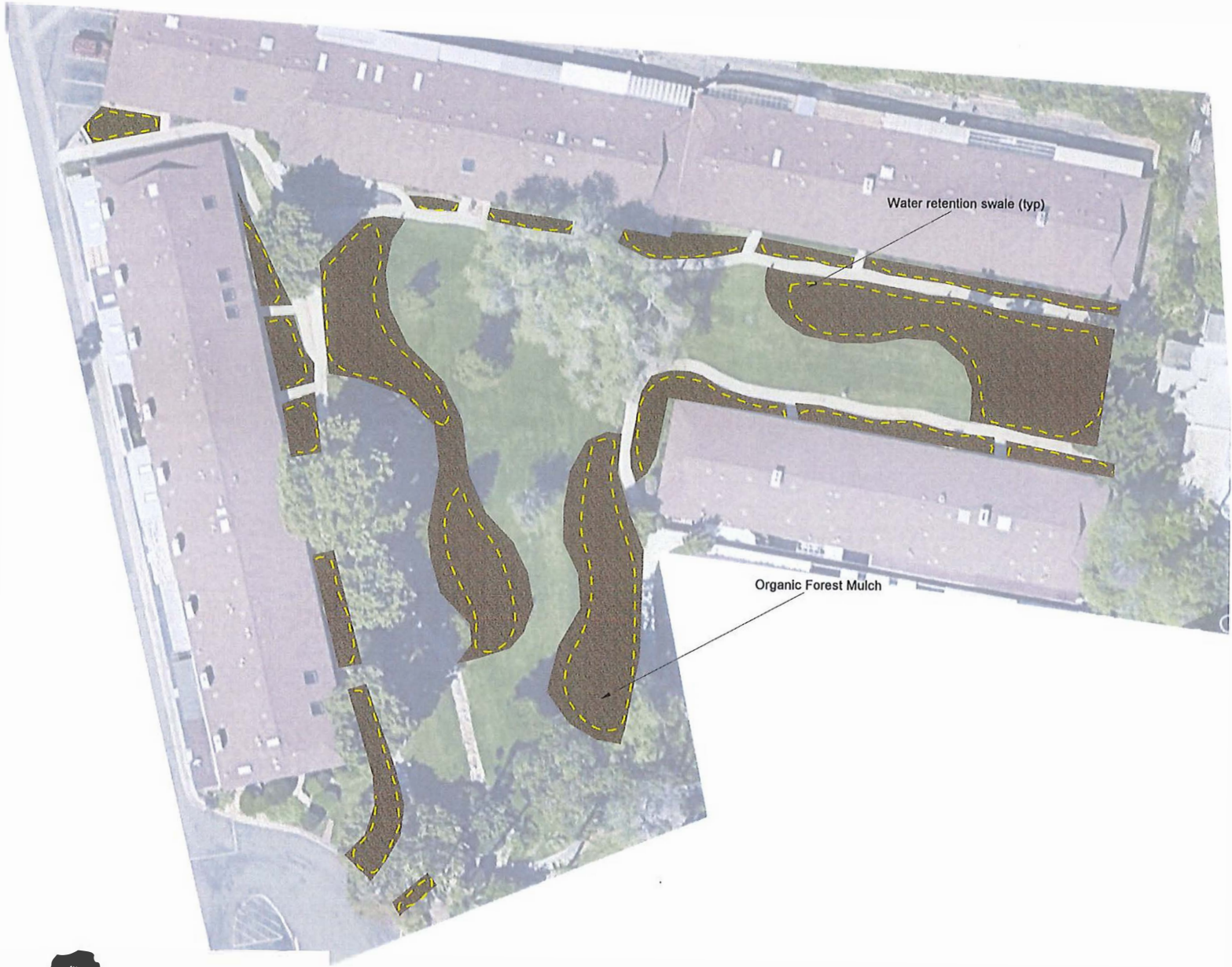
GREEN HORIZONS
LANDSCAPE & MAINTENANCE, INC.

1530 INDUSTRIAL AVE.
ESCONDIDO, CA 92029
PHONE: (760) 745-1776

GROSSMONT VILLAGE TURF REMOVAL/ RENOVATION



DRAWN BY:	BB
DATE:	6/21/22
SHEET:	1



Water retention swale (typ)

Organic Forest Mulch



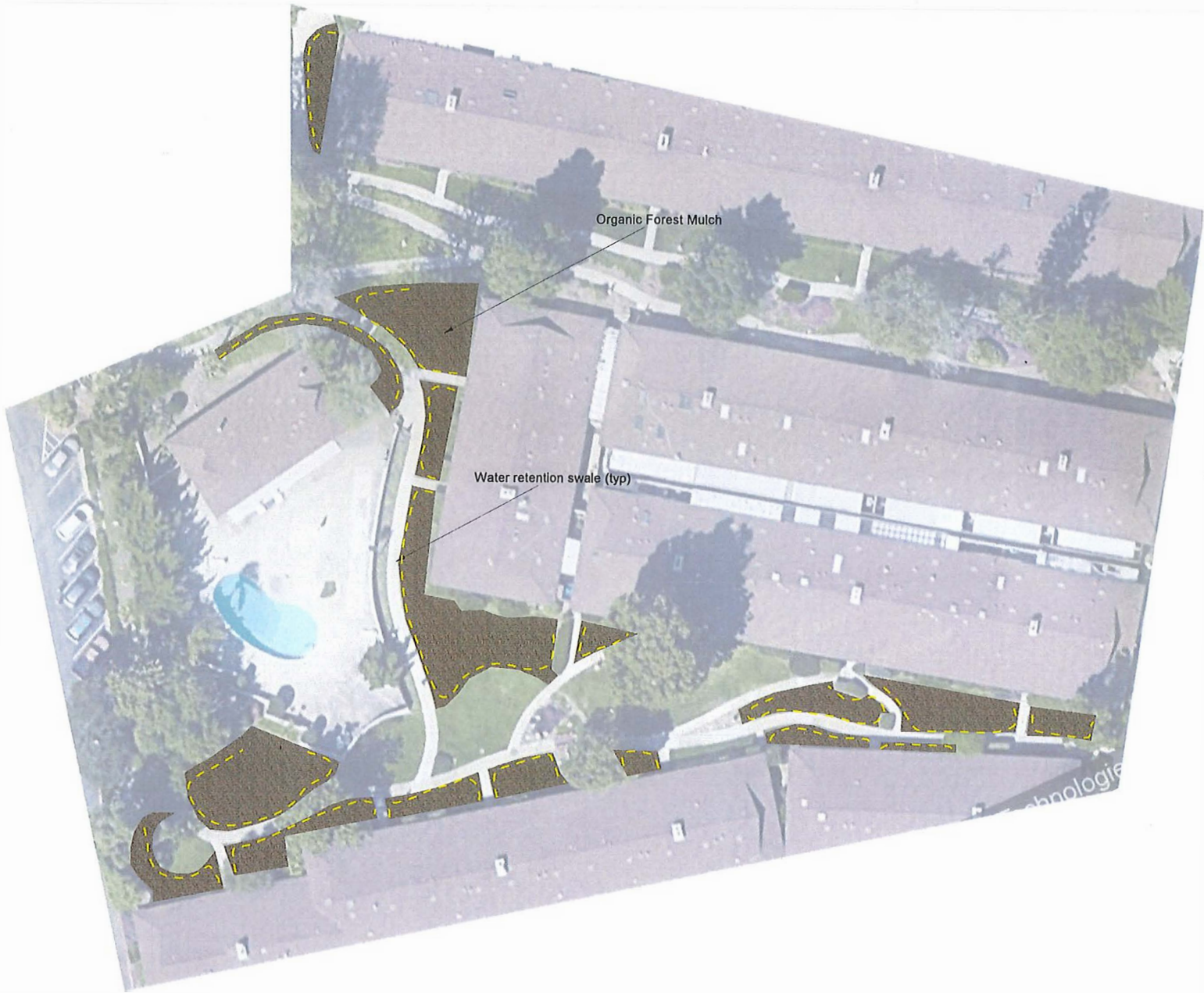
**GREEN
HORIZONS**
LANDSCAPE & MAINTENANCE, INC.

1530 INDUSTRIAL AVE.
ESCONDIDO, CA 92029
PHONE: (760) 745-1776

GROSSMONT VILLAGE TURF REMOVAL/ RENOVATION



DRAWN BY:	BB
DATE:	6/21/22
SHEET:	2



Organic Forest Mulch

Water retention swale (typ)



GREEN HORIZONS
LANDSCAPE & MAINTENANCE, INC.

1530 INDUSTRIAL AVE.
ESCONDIDO, CA 92023
PHONE: (609) 745-1776

GROSSMONT VILLAGE TURF REMOVAL/ RENOVATION



DRAWN BY:	BB
DATE:	6/21/22
SHEET:	3



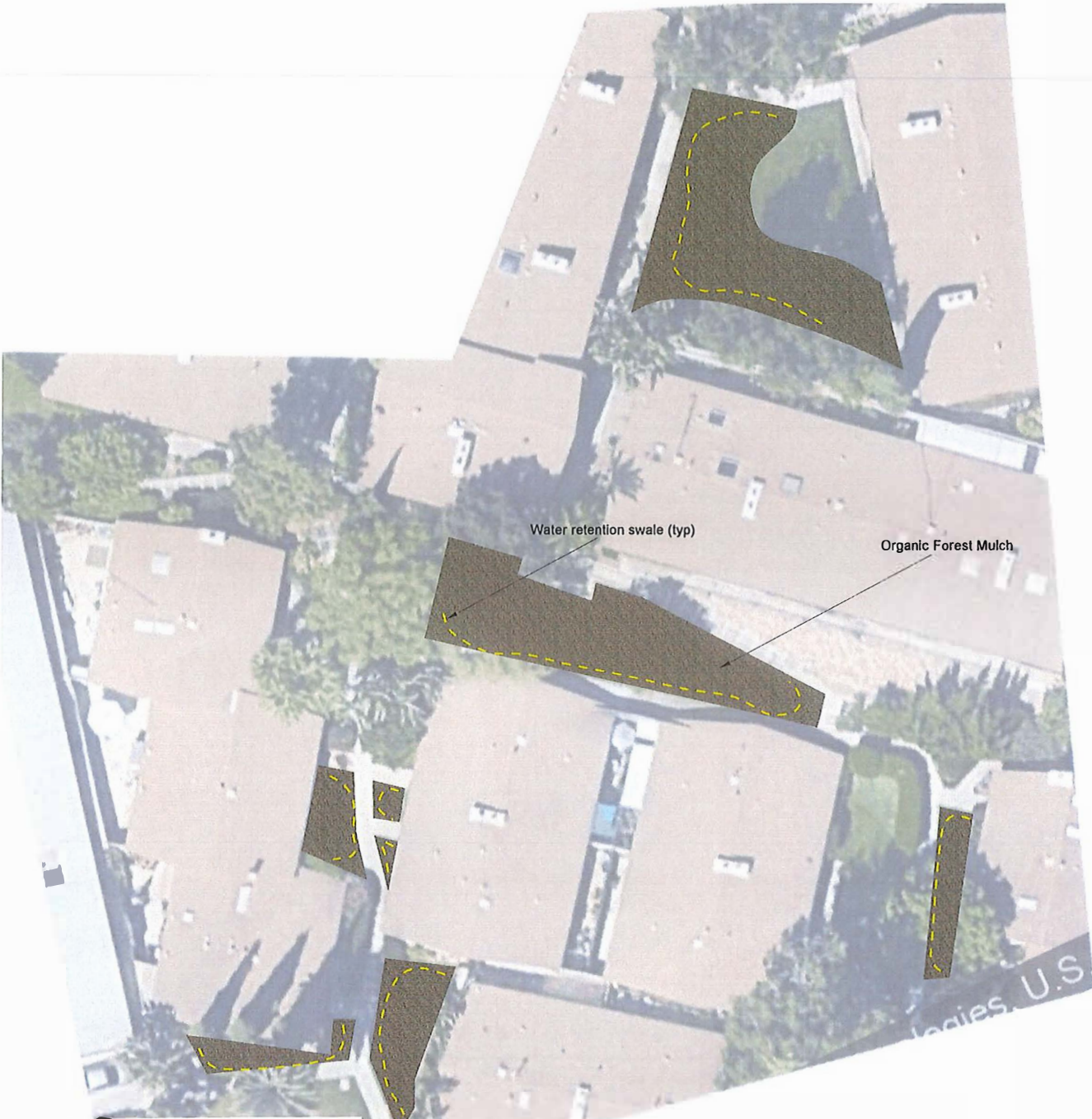
GREEN HORIZONS
LANDSCAPE & MAINTENANCE, INC.

1530 INDUSTRIAL AVE.
ESCONDIDO, CA 92029
PHONE: (760) 745-1776

GROSSMONT VILLAGE TURF REMOVAL/ RENOVATION



DRAWN BY:	BB
DATE:	6/21/22
SHEET:	4



Water retention swale (typ)

Organic Forest Mulch



GREEN HORIZONS
LANDSCAPE & MAINTENANCE, INC.
1550 INDUSTRIAL AVE.
ESCONDIDO, CA 92029
PHONE: (760) 745-1776

GROSSMONT VILLAGE

TURF REMOVAL/ RENOVATION



DRAWN BY:	BB
DATE:	6/21/22
SHEET:	5



GROSSMONT VILLAGE TURF REMOVAL/ RENOVATION



DRAWN BY:	BB
DATE:	6/21/22
SHEET:	6